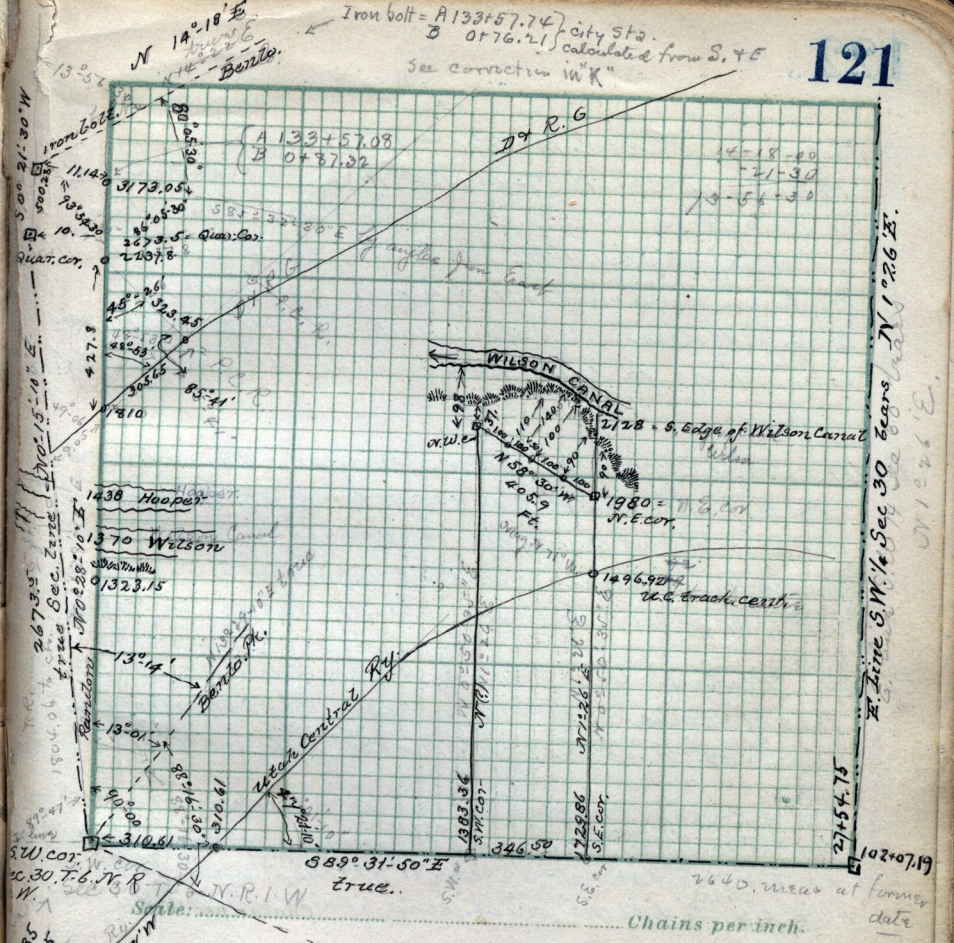


Iron bolt = A 133 + 57.08  
B 0 + 87.02 } city sta.  
calculated from S. & E.  
See correction in 'K'



Iron bolt = A 133 + 57.08  
B 0 + 87.02 } city sta.  
calculated from S. & E.  
See correction in 'K'

14-18-40  
-21-30  
13-54-30

E. Line S.W. 1/4 Sec 30 bears N 1° 26' E.  
01126616

N 14° 18' E  
11.14  
3173.05  
3273.5 = Quar. Co.  
2207.8  
48° 26'  
323.45  
306.5  
78.10  
427.8  
1438 Hoopers  
1370 Wilson  
1323.15  
13° 01'  
13° 14'  
85° 41'  
190.6  
310.61  
5. W. cor.  
S. E. cor.  
185  
1804.6  
267.95  
Time Sec. Error  
1902.38 - 10. E  
1702.38 - 10. E  
1702.38 - 10. E  
1902.38 - 10. E  
1902.38 - 10. E

102+07.19  
27+54.75  
1728.86  
1323.36  
346.50  
1496.90  
1728.86  
1702.38 - 10. E  
1702.38 - 10. E  
1702.38 - 10. E  
1702.38 - 10. E  
1702.38 - 10. E

Scale: 1" = 100 feet  
N.R.I.W. true  
S.W. cor.  
S.E. cor.  
185  
1804.6  
267.95  
Time Sec. Error  
1902.38 - 10. E  
1702.38 - 10. E  
1702.38 - 10. E  
1902.38 - 10. E  
1902.38 - 10. E

Chains per inch.  
2640. meas at former date

Survey made for  
D. Alexander  
June 29-30 - July 1  
JOHN LAYMAN & BAIRD, CHAINMEN.

tang = 003741 = between 12' & 13' of angle  
The mean of the courses of the East line and  
of the West line of this Quar. Co. = N 0° 50' 35" E. ~~1/4~~ =  
S. E. cor. for the reason of D. R. Alexander found  
the same in the center of the Quar. Co.